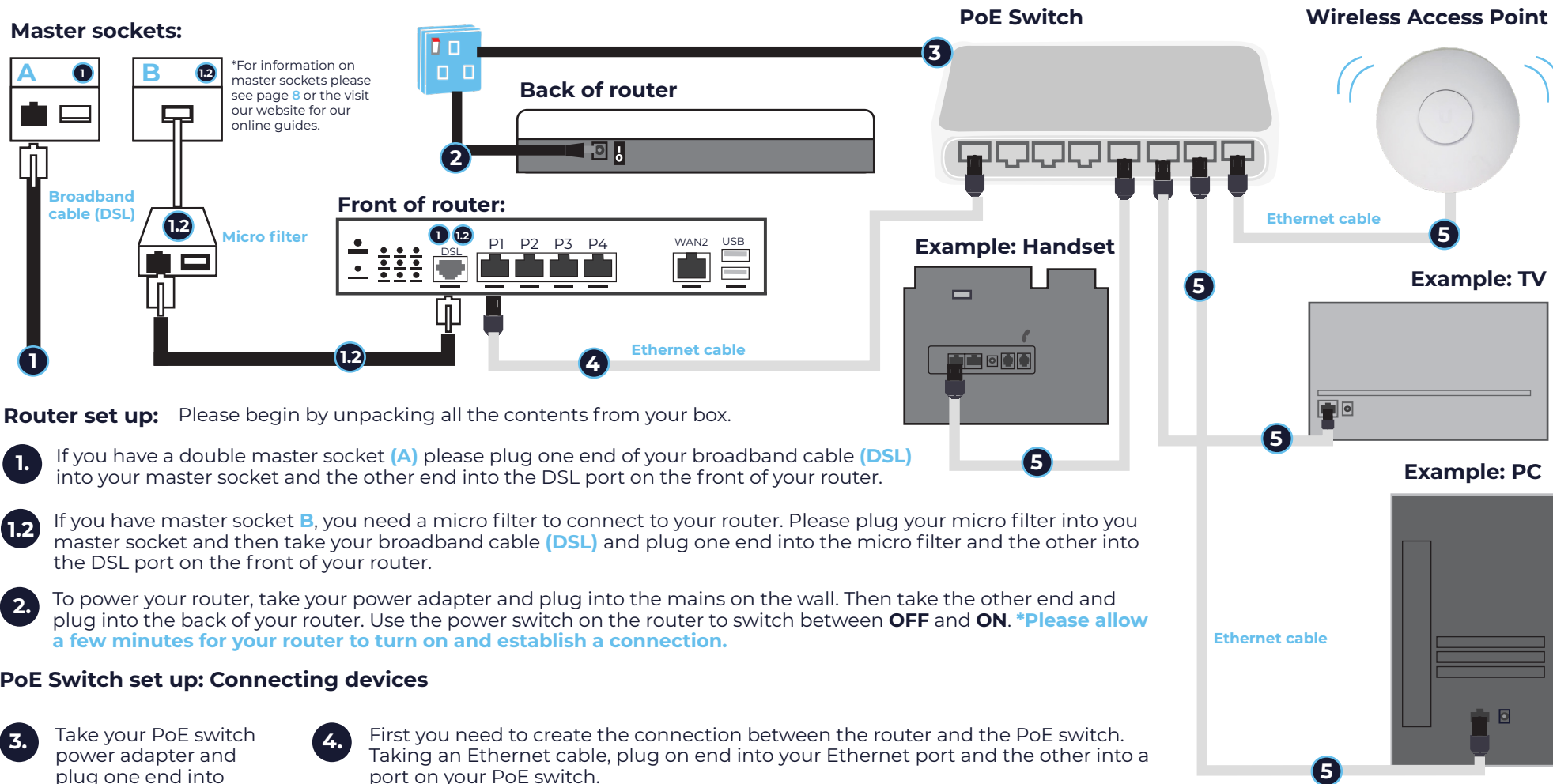


Setting up with a PoE switch

If your package comes with a PoE switch this will mean a different set up to the previous guides. This guide will set up your router to your devices through the use of a PoE switch, which connects you to the Internet through a wired process as well as connecting to your Wireless Access Point. This allows for both types of connections.



Router set up: Please begin by unpacking all the contents from your box.

1. If you have a double master socket **(A)** please plug one end of your broadband cable **(DSL)** into your master socket and the other end into the DSL port on the front of your router.
- 1.2 If you have master socket **B**, you need a micro filter to connect to your router. Please plug your micro filter into you master socket and then take your broadband cable **(DSL)** and plug one end into the micro filter and the other into the DSL port on the front of your router.
2. To power your router, take your power adapter and plug into the mains on the wall. Then take the other end and plug into the back of your router. Use the power switch on the router to switch between **OFF** and **ON**. ***Please allow a few minutes for your router to turn on and establish a connection.**

PoE Switch set up: Connecting devices

3. Take your PoE switch power adapter and plug one end into the mains socket and the other into the PoE switch itself.
4. First you need to create the connection between the router and the PoE switch. Taking an Ethernet cable, plug on end into your Ethernet port and the other into a port on your PoE switch.
5. You can now connect your devices through a wired process by using your PoE switch. The diagrams above show you how to connect your devices with a Ethernet cable into the ports on your PoE switch. Devices can also connect to the Internet wirelessly by connecting through your Wireless Access Point.